

1996 7 17 () 10 (),

가
(batch-type reactor) 가

가 , 13

THF
NAH가 (180) (氣狀)
(蓄熱) , SAH
가

1.

: 日本 堺泉北臨海 : 13
: 1996. 7. 17() 10 () :
: :

2.

1996 7 17 , 堺泉北臨海

가
13
1km
大阪府 가
“

3.

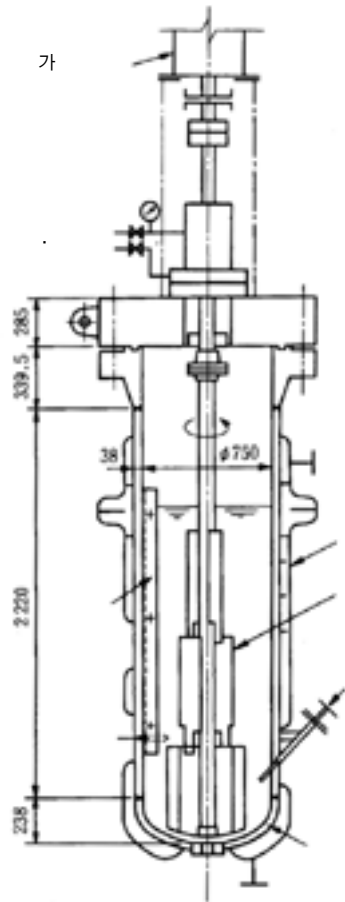
가 26 , 42 ,
[1]
가 ,
NAH SAH 2

4.

[2] NAH SAH , SAH 3

2

가



【 1】

가 1 SAH

2

(가)

<ul style="list-style-type: none"> : NAH ⁽¹⁾ : SAH ⁽²⁾ : ZH ⁽³⁾ : Na, Al, H₂ : 100kg./cm² : 230 : 1. 118 : SB46 : SM 41B
--

THF (tetrahydrofuran, toluene)

	NAH	SAH
()	130 ~ 135	135 ~ 140
(kg _i /cm ²)	90	90

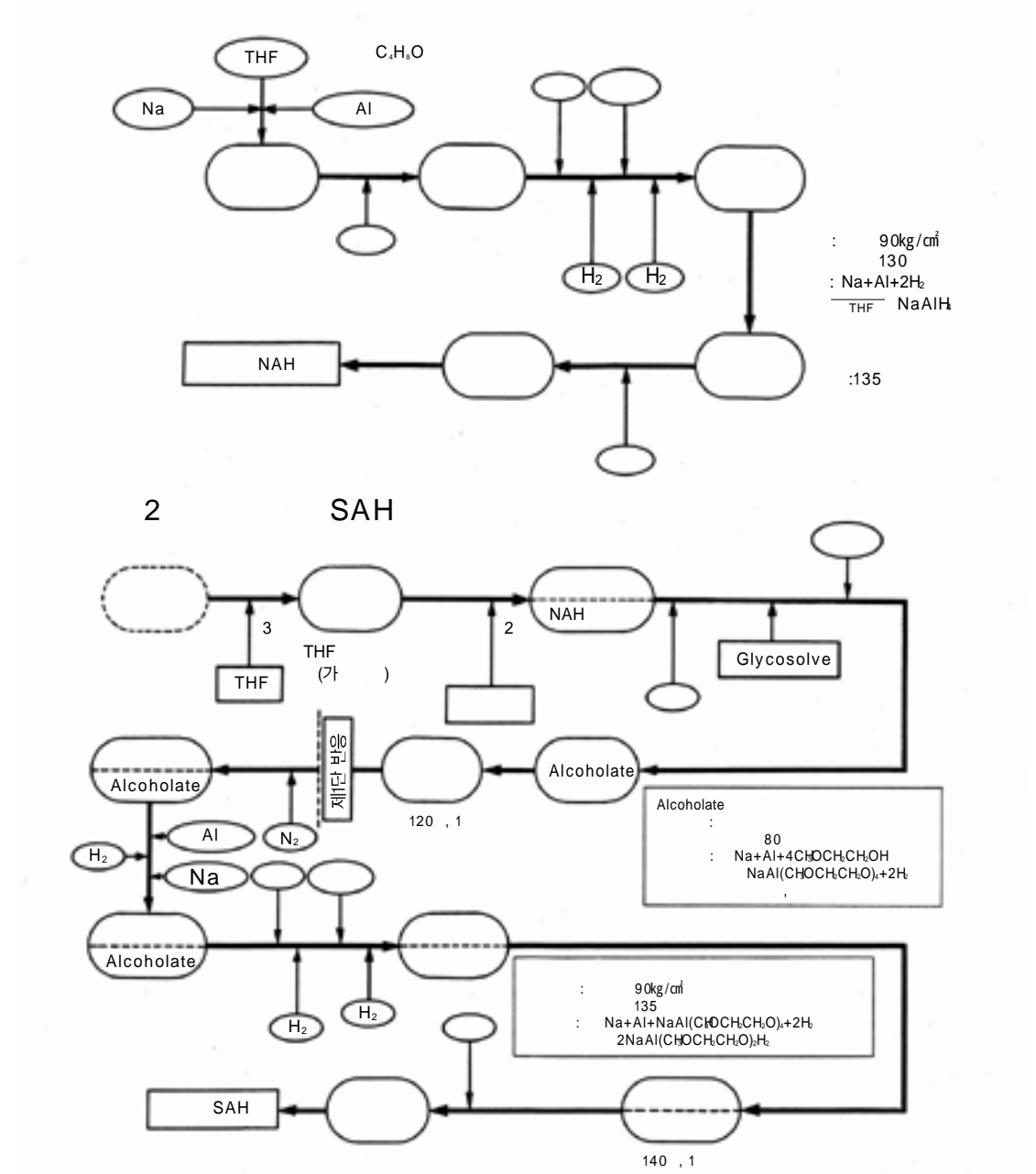
- (1) Natrium-Aluminum Hydride
- (2) Lithium bis-2 methoxy ethoxy
- (3) Glycosolve

(溶出洗淨)

2

SAH

NAH



【 2】NAH

2

SAH

5.

(hand hole)

10kgf/cm²

가 115 , 28kgf/cm²
(135) (90kgf/cm²)

가

(135)

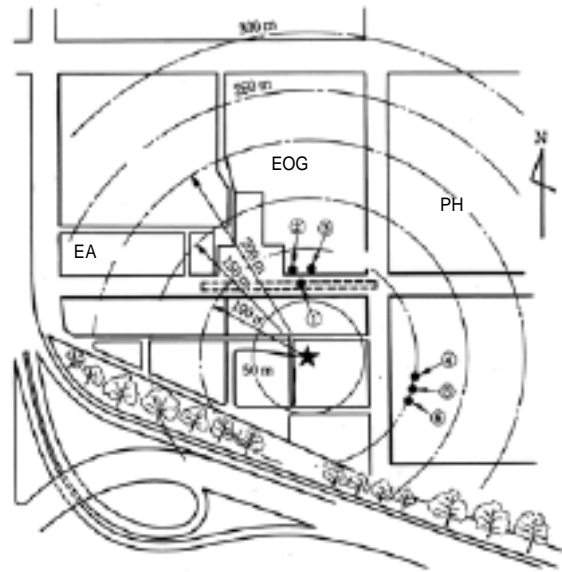
가

, 7 10

5

9 59

10 00



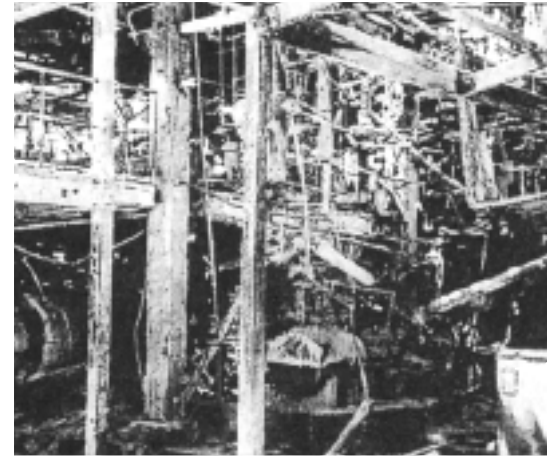
【 3】

		[m]
	2400x3000, 2.5t	75
	1Bx2000	75
	1Bx300	75
	5Bx300, 50kg	100
	30x40x50, 2kg	100
	1Bx50 ,5kg	100

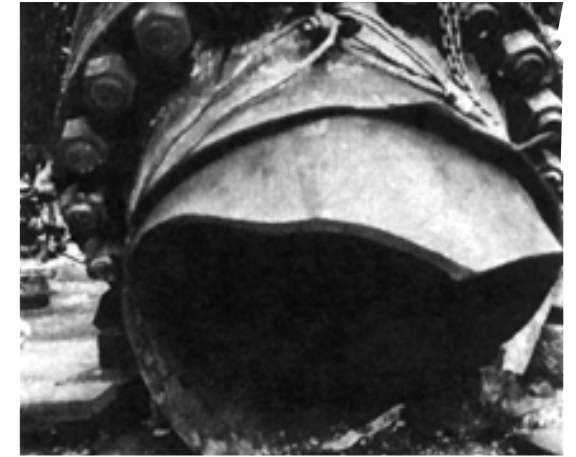
6.

(2.5)가
75m

680m
가 [4 5].



【 4】



【 5】

7.

7.1

가
104.7nm(14%)가 [6
(SEM; Scanning Electron Microscope)

45

(延性; 가)
가 (,)

. SEM ,
() ,
45

가 2 [7] .

500kg/cm²

460

7.2 DSC ARC

NAH+ THF

DSC(Differential Scanning Calorimeter)

가
 , 230
 180
 , NAH+ THF 180
 [8].
 230
 9].

7.3

1

ARC

0.4 wt.%(2kg) THF가

() X

[Al(OH)₃]

[NaAl(OH)₂]

NAH

NAH가

, 1995 7

가 10mm

, 1996 1

NAH

(194) 1995

가

SAH

10kg,

12kg

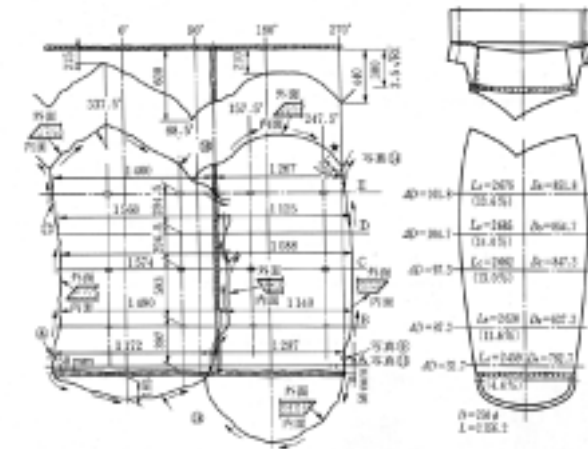
(

1.4).

SAH

가

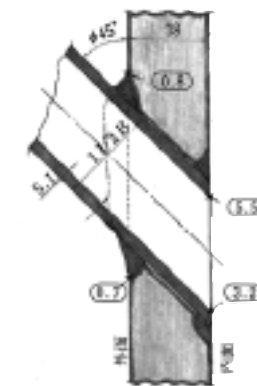
NAH



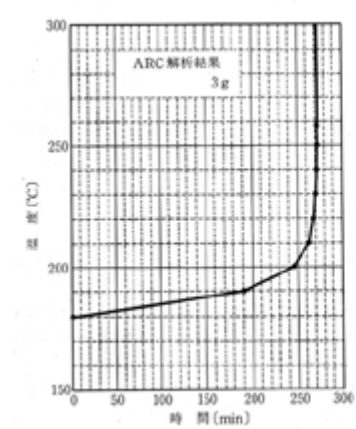
【 6】



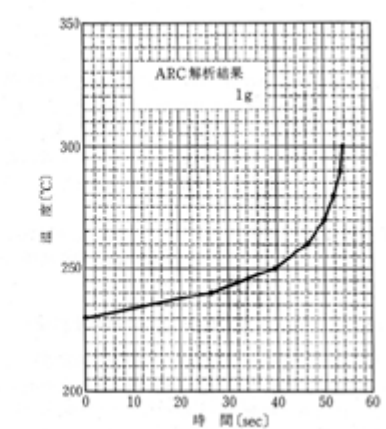
【 7】



(1.5B)



【 8】NAH+ THF(12%)



【 9】SAH+ Toluene(70%)

7.4

가 , 가 , 8
kg/cm² ,

가 , 가

8.

SAH , SAH , SAH
THF가 , THF , THF , THF
NAH가 (180)
SAH가
가 ()
()



() 千葉工場

1991 6 26 () 10 15 () , () 千葉工場

“ -SF”

가 ,

900m

15

(2 ,

13)가 .

(methylhydr o

peroxide;) ,

0.1%

%

